



UNIVERSITÉ DE TECHNOLOGIE DE BELFORT-MONTBÉLIARD

INTERNATIONAL STUDENT GUIDE



2025 VERSION

SUMMARY

Studying at UTBM is the perfect opportunity to learn in the 4th engineering school of the country, member of the Conférence des Grandes Écoles, at the heart of Europe. Come and join us to become an open-minded and internationally trained engineer, familiar with state-of-the-art technologies.

Presentation

3 campuses	p. 3
Our courses	p. 4

Administrative procedures

Admissions	p. 5
Double Degree	p. 7
Required documents	p. 8
Enrollment.....	p. 9

Welcome to UTBM!

Integration week	p. 10
Welcoming and help	p. 11

Practical life

Accommodation	p. 12
Transportation	p. 14
Health insurance	p. 15
Finances	p. 17

Leisure

Student life	p. 19
Must do	p. 20

Glossary and contacts

A team at your service.....	p. 21
Glossary.....	p. 22



Websites useful to prepare your arrival:

gouv.fr
étudiant

CAMPUS
FRANCE
campusfrance.org

3 campuses

There are 3 campuses at UTBM: Belfort, Sevenans and Montbéliard.



Belfort campus

Computer Science
Energy Engineering
Rooms: A to I



Download the
map

Sevenans campus

Mechanical Engineering
Undergraduate
Industrial Systems
Supply Chain
Rooms: P and T



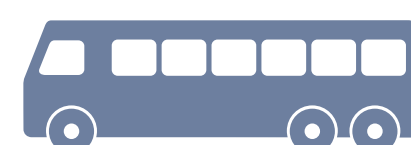
Download the
map

Montbéliard campus

Mechanical Engineering
and Ergonomics
Mechanical Engineering
(apprentices)
Rooms: M



Download the
map

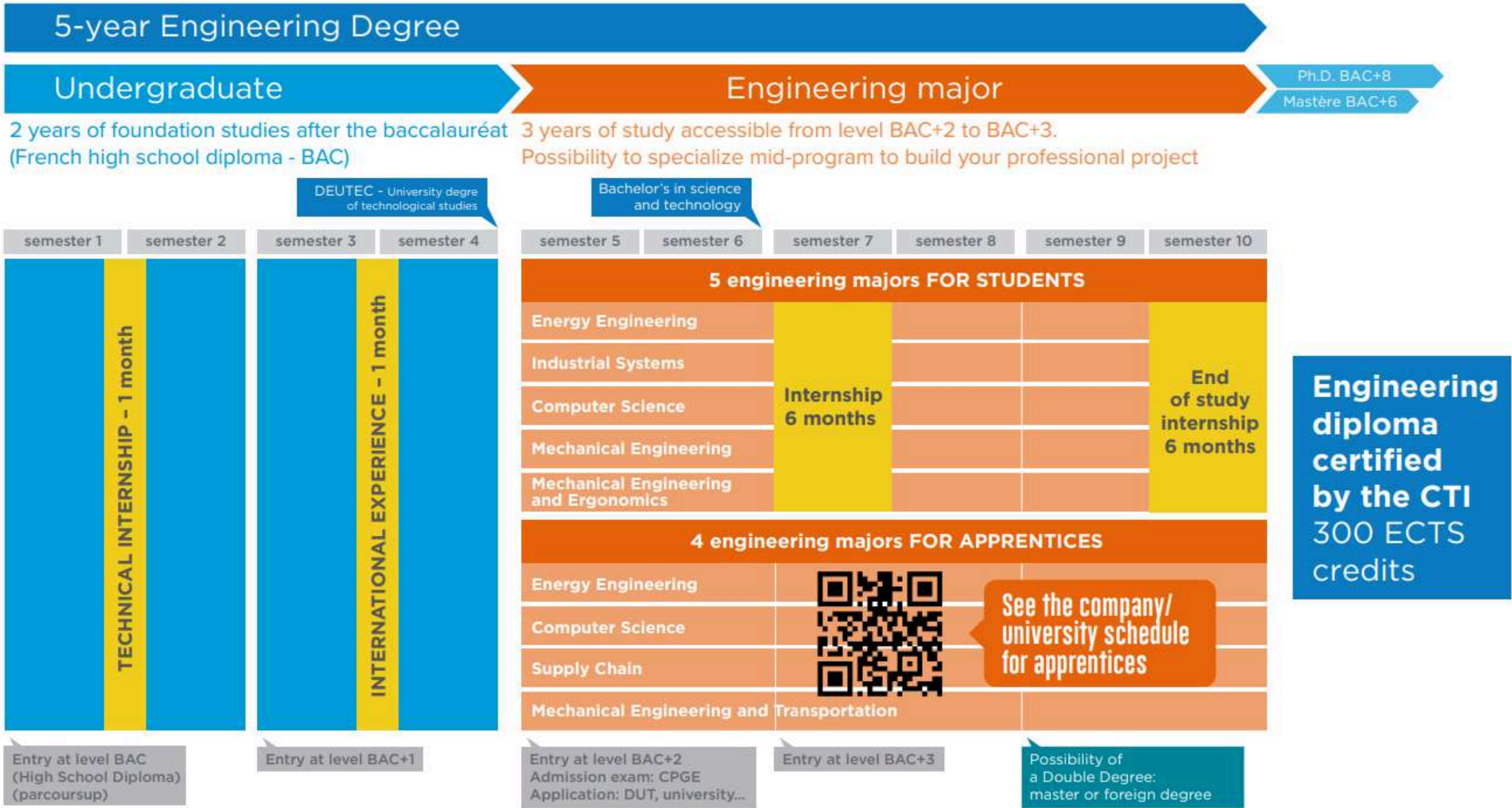


The three campuses are
well connected by bus

Our courses

UTBM trains state-of-the-art engineers, technically skilled while being open-minded and open to te world.

*In France, years of studies are counted after the Bac (=highschool diploma). For example, two years of studies would be Bac +2



All along their formation, students are also registered in a Social Sciences minor, to acquire a humanist and open-minded point of view on technology.

UTBM also offers 2 masters (2 years), 1 mastère (1 year), and PhDs (3 years).



To facilitate your integration, join our French course program (FLE)! In small group of students, learn the language and discover the culture. Five levels are available, from real beginner to sitting an international certification exam. Our classes have been certified “Label Qualité FLE” in 2024.



Humanities



Guide des UE



Engineering courses



Masters



Mastère



PhDs



Admissions

In the Engineering Diploma

The Universities of Technology network (UTBM, UTT, UTC) shares the same admission procedure. There is one application file. Students are selected based on this file and sometimes on interviews (applicants living outside of France are only selected on file).

If you are from outside the European Union, you must first register to Campus France (go on your country's website). You will need your Campus France registration number to submit your application file.

Application fees : 105€



Send my application



More information



To be admitted directly in the Engineering Specialisation (Bac +2), **you must be a graduate or soon-to-be graduate equivalent to the French level Bac +2 (CPGE, BUT, BTS, L2, L3)**



Complete list of admissible diplomas

In master (entry from bac +3)

If you are a resident of a country in Campus France*, you must apply through Études en France.

Otherwise, you must apply through E-Candidat.



Études en France



E-Candidat



More information

*See the complete list of countries on [Campus France website](#).

In PhD (entry from bac +5)

You can send a spontaneous application all year long to inscriptions.doctorat@utbm.fr (CV and Cover Letter).



More information



Admissions

Tuition fees - Academic Year 2024-2025

Undergraduate	2 850 €
Engineering specialisation	3 879 €
Master	3 879 €

WARNING!

UTBM doesn't grant scholarships. You will have to provide a proof of sufficient resources to your French Embassy or Consulate.

Eiffel Scholarship

Eiffel is an scholarship for excellence, created by the French Foreign Affairs Ministry and managed by Campus France. Foreign valedictorians can apply to get help financing their Engineering or Master diploma in France (in 3 years maximum). You can also apply if you intend to do a PhD.



Applications must be sent to Miss Adélaïde Careil before November, for a selection and arrival in September of the next year.



More information

adelaide.careil@utbm.fr

Scholarships and help

UTBM doesn't grant scholarships for students. Sholarships can be available depending on your country of origin.



Double Degree

Coming to UTBM through a Double Degree program allows you to get a UTBM diploma alongside your home university one. Depending on the program, students usually come spend their last year of studies at UTBM.

List of Partner Universities

Country	University	Degree	
		Partner University	UTBM
Brazil	Universidade Federal do Parana (UFPR)	Engineering degree	
	Universidade Tecnologica Federal do Parana (UTFPR)	Engineering degree	
China	Université de Technologie Sino-européenne de Shanghai (UTSEUS)	Bachelor	Engineering degree
Canada	Université du Québec à Montréal (UQAM)	DESS	Engineering degree
	Université du Québec à Chicoutimi (UQAC)	Master	Engineering degree
	École de Technologie Supérieure (ÉTS)	Master	Engineering degree
Switzerland	Haute École Arc (HE-Arc)	Bachelor	Engineering degree
Taiwan	National central University of Taiwan (NCU)	Master	Engineering degree

To apply, follow the same procedure as for an exchange semester.

Required documents

You must bring hard copies of all these documents with you.



Please make sure that the documents are translated in French!
Always give copies, not the originals!

Citizens of the European Union, Switzerland, Monaco, Andorra, Algeria, Vatican, Saint-Martin	Citizens of any country outside the UE (including the United Kingdom since January 1st 2021)
A proof of identity (ID, passport)	A birth certificate - translated in French
	Passport (in validity at least 3 months after the end of your stay)
	Long-stay Visa (more than 90 days)*
A scholarship certificate - translated in French	A proof of income or scholarship certificate - translated in French
At least 3 passport-size pictures	At least 3 passport-size pictures
European Health Insurance Card (or a proof of health coverage)	Proof of health coverage (at list for your first month in France) OR for citizens of Québec : form SE401-Q-106
Vaccination certificate (Diphtheria, Tetanus and Poliomyelitis up to date)	Vaccination certificate Vaccination certificate (Diphtheria, Tetanus and Poliomyelitis up to date) Tuberculin test (intradermal) less than 3 months old (except for residents of Canada, Australia, South Korea, Japan, New Zealand and the United States)
Copy of your diplomas and academic transcripts (in French or English)	Copy of your diplomas and academic transcripts (in French or English)



*You must apply for a long-stay Visa (more than 90 days) through the French Embassy or Consulate of your birth country, at least a month before your arrival. Please refer to FranceVisa to know your country's procedure. Upon your arrival in France, you have 3 months to validate your Visa online on the ANEF website and pay the 60€ tax.
You can renew your Visa on the ANEF up to 2 months before its expiration (see video attached).



Enrollment

Once admitted to UTBM, I enroll administratively and pedagogically.



I enroll in UTBM

After my registration, I get:

My student card, to:



- Pay my meals at the CROUS (resto U)
- Access to the buildings
- Borrow books at the libraries (UTBM and Montbéliard)
- Print my lessons
- Use the self-service printers
- Pay my drinks and snacks at the automatic dispensers

And benefit of all of the advantages of IZLY!



My UTBM email



My user account to access to the online services



- Timetable
- Academic information
- Grades



EDUROAM

(free wifi on the campuses)



Self-service
computers

User account :

- A login (First letter of your name + surname, max 8 characters)
- A temporary password (sent by the administrative department), that you must change as soon as possible on :
Mon Espace UTBM - [ent1], onglet ACCUEIL > Mon Profil UTBM > Changer mon mot de passe.



Integration week

Upon your arrival, the AE (Student Association) is organizing two amazing weeks of integration! We will warmly welcome you with parties, activities and of course the renowned hike up the Salbert and integration weekend! Follow us on our socials to know all the details. See you soon in your new school 😊



@integ_ae_utbm



Intégration - AE UTBM



To guide you at your arrival in France and in your new school, you will have the help of a referring student. You will receive his contact by mail in July. His mission? Help you prepare your arrival and settle in France!

If you lose his contact, you must write to the Admission Department: service.admissions@utbm.fr



Welcoming and help



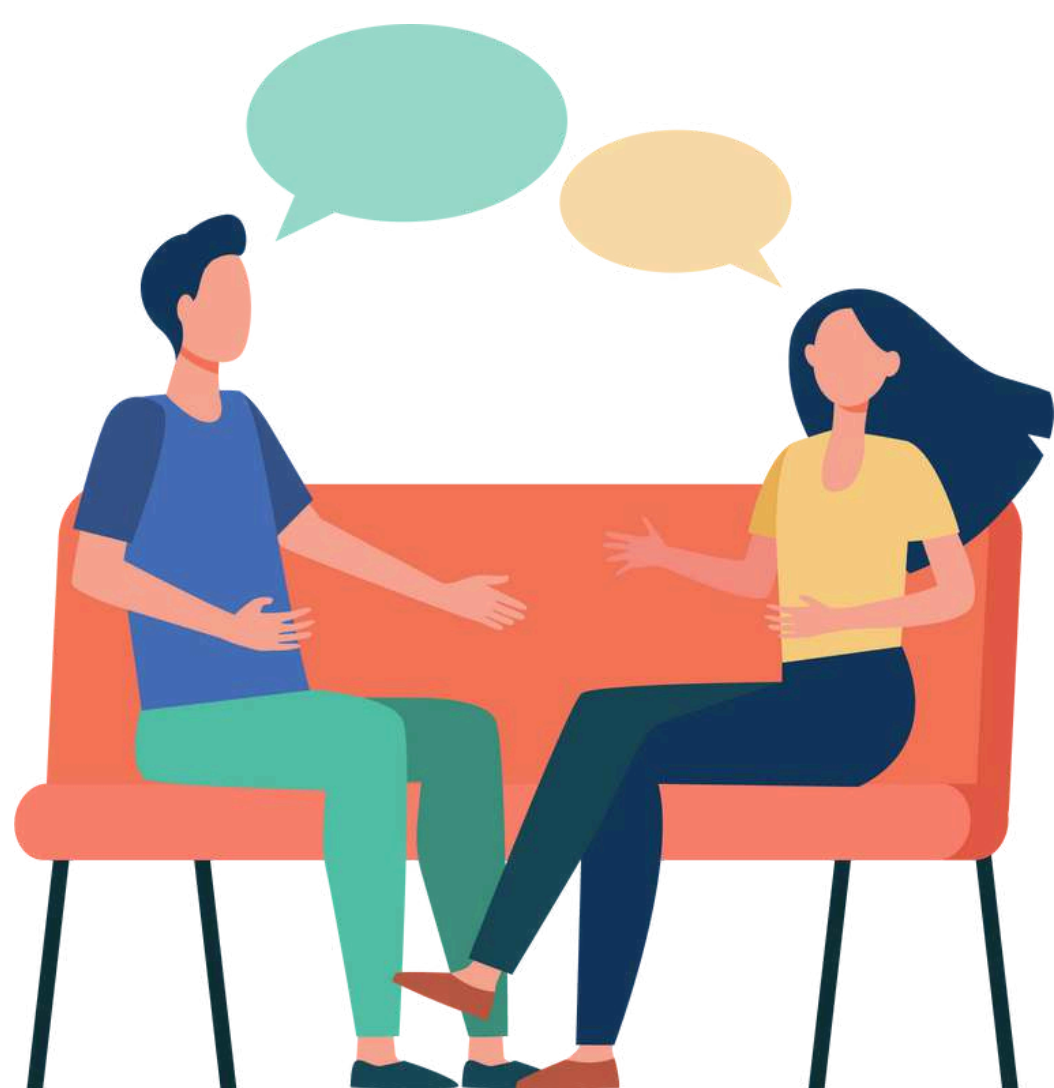
@club.welcome



Club Welcome - AE
UTBM



The Welcome Club is a strong link between French and international students. We organize all sorts of events during the semester to discover French culture, get to know each other, build friendships and enjoy 😊 Follow us on our socials to get all the information!



Meetings for international students

Administrative procedures, health, hardships... need help?
Book an appointment by Teams or at Belfort (E209) and come and meet us! 😊



Student Office

Here to help you with your associations and projects



Sevenans

Office P327
(Pont, 3rd floor)

Montbéliard et Belfort

On appointment only



vie.etudiante@utbm.fr



Accommodation



A furnished room of 9m2 with bathroom included. The kitchen is shared



275 € / month

BELFORT



Résidence Duvillard



Résidence Eluard



Résidence Braudel et Sartre

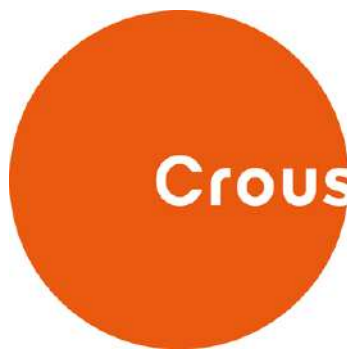
MONTBÉLIARD



Résidence Thom



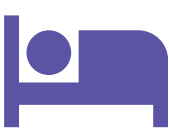
Résidence des Portes du Jura



Go to the University Restaurants for full-course meals at low prices!



3.50 €



20m2 furnished studios or shared apartments



340 € to 460 €/ mois



Belfort, Montbéliard, Sevenans

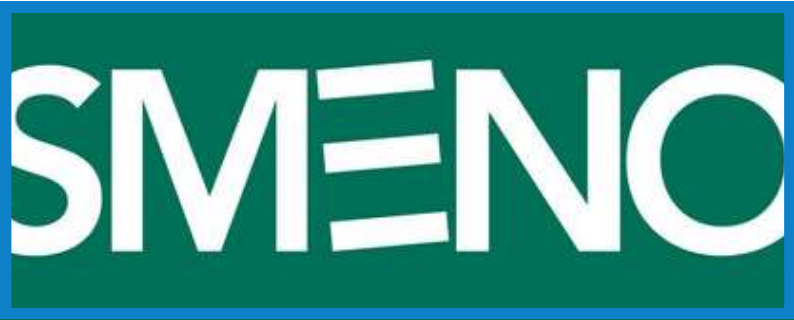
You want to find an accommodation through a private owner?



More information

Accommodation

You must be covered by a **housing insurance**. Here are a few options:



You must have a **civil liability insurance** to register at UTBM. Don't forget to pick this option while subscribing to your housing insurance!

Help for your accommodation

GARANTEE



For students from 18 y.o. to 30 y.o.
You must have received your Visa to apply for Visale



Until 28 y.o.



DEPOSIT



0% loan to help you pay your deposit

RENT



APL: Getting reimbursed of a part of your rent



Transportation

Airports



BASEL-MULHOUSE



10 min bus



30 min train



LYON



10 min bus



2h30 train



STRASBOURG



10 min bus



2h train



PARIS



1h metro



3h train

If you plan to arrive by plane, we strongly advise you to land at **Basel-Mulhouse**. If you land in Paris, you can take the TGV (fast train, direct), or the TER, cheaper but slower.

Belfort



Gare TGV MOVAL



20 min bus



Gare BELFORT CENTRE



Optymo



Crous Bed and Breakfast



Best Western Hôtel



Campanile

Montbéliard



Gare TGV MOVAL



20 min bus



Gare MONTBÉLIARD



EvolitY



Ibis Hôtel



Campanile



Download this app to buy your bus tickets on your phone



Do you plan to travel by train? Don't forget to buy a Carte Avantage Jeune for capped fares and discounts!

Health coverage

The National Health Insurance, or Social Security, is mandatory and free. It reimburses up to 70% of your medical fees.



We advise you find a **médecin traitant** (a general practitioner who follows your medical care), for improved medical monitoring and reimbursement. More information on ameli.fr



I'm a citizen of the European Union

- I check that the health insurance of my home country covers me during all of my stay.
- I get my **European Health Insurance Card** and present it at every medical consultation.
- Public hospitals are free of charge in France. For the other practitioners, I send my **feuille de soins** (medical bill) to my home insurance to be reimbursed.



I'm not a citizen of the European Union

- Once arrived in France, I register to the Social Security on <https://etudiant-etranger.ameli.fr/#/>



- I subscribe to an **international health insurance** for a month and a half, to be covered during the processing of my file
- Once my file processed, I receive a temporary number and an **attestation de droits** (certificate of affiliation). I fill the online form to receive my **Carte Vitale** (insurance card).



Please remember to update any change in your postal address on your Ameli account in order to receive the documents necessary.



Health coverage



Getting reimbursed by the Social Security

• I still haven't received my Carte Vitale :

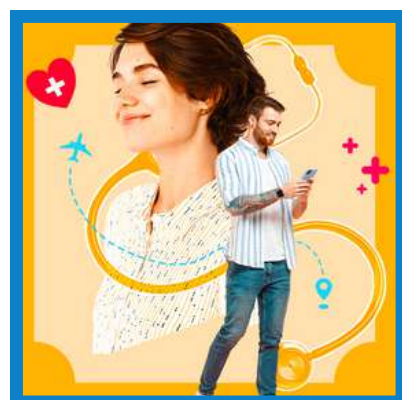
1. I show my *attestation de droits* to the practitioner.
2. I ask for my *feuille de soins* (medical bill).
3. I send it by post to my affiliated **Caisse Primaire d'Assurance Maladie**.

Caisse Primaire Assurance Maladie CPAM 90
12 r Gén Strolz, 90000 Belfort

• I've received my Carte Vitale :

1. I show my **Carte Vitale** at every consultation.
2. The reimbursement goes automatically to my bank account.

The Social Security reimburses medical fees up to 70% only. If you want a better reimbursement, we advise you to subscribe to a **complementary health insurance**.



Preventive health check

Any first entrant on the French territory must undergo a **preventive health check**. This check-up free of charge enables you to be referred for treatment if necessary.

Booking an appointment Belfort



03 84 58 77 78
07 85 64 01 60



sse-belfort@univ-fcomte.fr

Booking an appointment Montbéliard



03 81 99 47 38
07 85 64 01 60



sse-montbeliard@univ-fcomte.fr



Estimated monthly budget

Accommodation	270 € - 380 €**	
Insurances	Accommodation	10 €
	Civil liability	Included in your housing insurance or 20 € / year
	Complementary health insurance*	12 €
Groceries	250 €	
Phone package	From 2 to 20 €	
Transport (bus)	From 13 € to 36 €	
TOTAL	560 € - 750 €	

One-time costs

AE registration* (Student Association)	35 € for a year 20 € for a semester
Deposit (down payment on entering your accommodation)	A rent (270 € - 380 €)
Residence permit (students outside the UE)	60 €

* Non mandatory

** APL (CAF) non included (reimbursement from 30 € to 200€, go on www.caf.fr)

Finances



Having a French bank account will make your life so much easier!
UTBM has a partnership with **Crédit Agricole de Franche-Comté**.
Having an account will cost you only **1€/year**.
The bank gifts you **50 €** if you open an account, so don't hesitate!
Please come with your UTBM scholarship certificate to benefitate from this offer.

Finding a student job

- Advices and tips



- Websites with job offers



- Socials (take a look at Facebook support groups!)



- Temporary employment agencies for short-term jobs



You aren't an European Union citizen? Don't forget to check your employment rights!



Student life



The AE in a few words

- more than **50 clubs** (robotics, mix, shooting, brewery...)
- a **serie of big events during the semester** (integration week, gala, festiv'UT, week of March...)
- **common areas**, to meet, eat and share

Simply put, the Student Association is here to help you organize your parties and weekends, and make your studies at UTBM unforgettable! 😊



Do you want to practice a sport? The BDS is here for that! Numerous slots are available all year round in Belfort and Montbéliard. Joining a club is also the best way to make friends in France 😊



Junior UTBM connects UTBM students with companies where they can carry out paid missions. Whether you want to launch an association or get involved in concrete projects, working with the Junior is the best way to prepare your professional career!

Must do

The Crunch Time



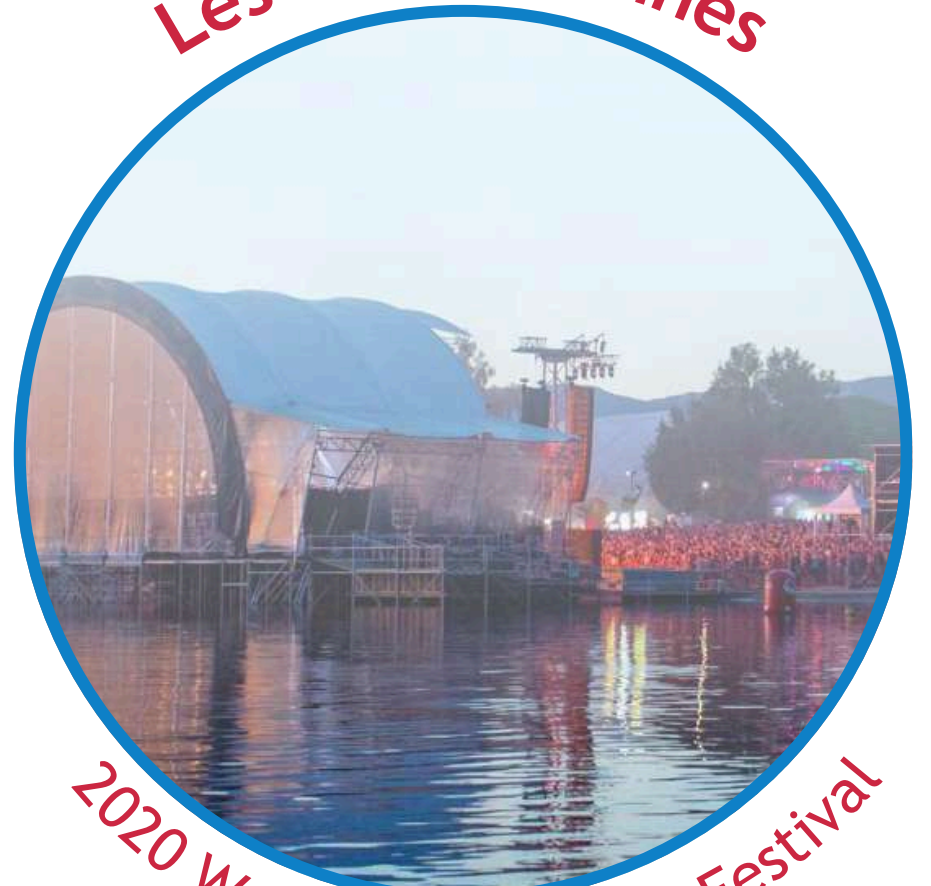
a week of innovation

The FIMU



a student music festival on fire

Les Eurockéennes



2020 World's Best Music Festival

Les lumières de Montbéliard



a magical Christmas market

La Franche-Comté



natural and culinary heritage

Switzerland



a dreamland 30 min away from Belfort

La Bourgogne



land of exceptional wines

The French Alps



breathtaking lakes and mountains

L'Alsace



picturesque towns and Christmas markets

Europa Park



the biggest German theme park 1h30 away from Belfort

A team at your service

The International Relations Office (IRO) is here to help you! If you have any question, please contact relations.internationales@utbm.fr or the appropriate staff member.

PARTNERS AND STAFF



Franck GECHTER

Director

> relations.internationales@utbm.fr



Heather COOPER

Vice-director

> heather.cooper@utbm.fr



Pauline DOXIN

Erasmus and partnership coordinator

> pauline.doxin@utbm.fr



Mireille JACQUOT

Assistant

> mireille.jacquot@utbm.fr



Natallia BOLLE

Staff mobility coordinator

> natallia.bolle@utbm.fr



Rossana BRUNDO

FLE (French Language for Foreigners) teacher

> rossana.brundo@utbm.fr

INBOUND MOBILITIES



Adélaïde CAREIL

Inbound students reception officer
Eiffel Excellence Scholarship

> adelaide.careil@utbm.fr



NiuNiu DUPLAIN

UTSEUS (China) coordinator

> niuniu.duplain@utbm.fr



Haylee COFIELD

Malaysia program coordinator

> haylee.cofield@utbm.fr

OUTBOUND MOBILITIES



Jérôme HORLACHER

Outgoing student mobility coordinator

> jerome.horlacher@utbm.fr



Gladys TRIPIER CONSTANTIN

European destinations

> gladys.tripier@utbm.fr



Fanny HATUEL

Non-European destinations

> fanny.hatuel@utbm.fr



Glossary

Formation

FISE	Engineering specialty (students)
FISA	Engineering specialty (apprentices)
TC	Undergraduate School (two years of preparatory cycle)
HUMA	Humanities Department (T2S and EC)
T2S	Technology, Science and Society (social sciences classes)
EC	Expression Communication (languages classes)
MECA ERGO	Mechanical Engineering and Ergonomics
MECA	Mechanical Engineering
GENIE INDUS	Industrial Systems
ENER	Energy Engineering
INFO	Computer Science
CS	Scientific knowledge (fundamental courses)
TM	Techniques et Methods (advanced courses)
ST	Internship

Classes

UE	A class
CM	Lectures
TD	Tutorial classes
TP	Lab
DU	University Diploma (state-approved)
ECTS	European Credits Transfer System (credits for each class)

Departments

AE	Student Associations
BDS	Sports Office
DRII	International Relations Department
DRE	Corporate Relations Department
DSI	IT Department
PPE	Plannings and Exams Department



UTBM, A CIVIC UNIVERSITY

Engaged for the safety and health of its students and staff

UTBM, AN ECO-RESPONSIBLE UNIVERSITY

That plays its part in limiting the impacts of human activities on the environment

UTBM, A UNIVERSITY THAT PREPARES ITS GRADUATES-TO-BE TO THE FUTURE WORLD

